

Windy

Nendo

Design Collection

DECORATORI®
BASSANESI

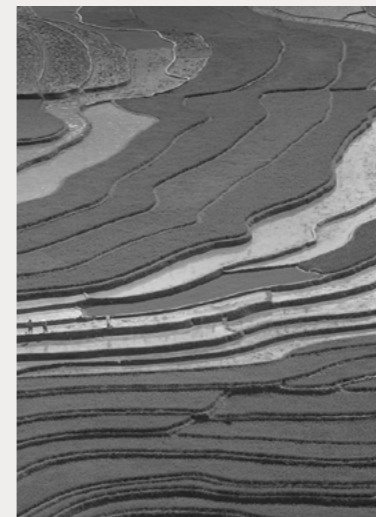
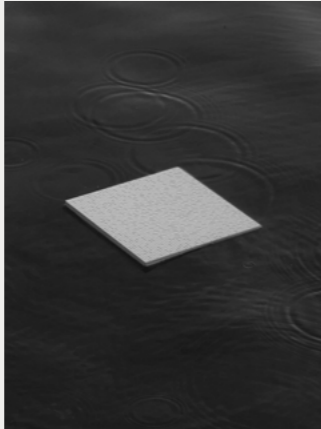


Windy

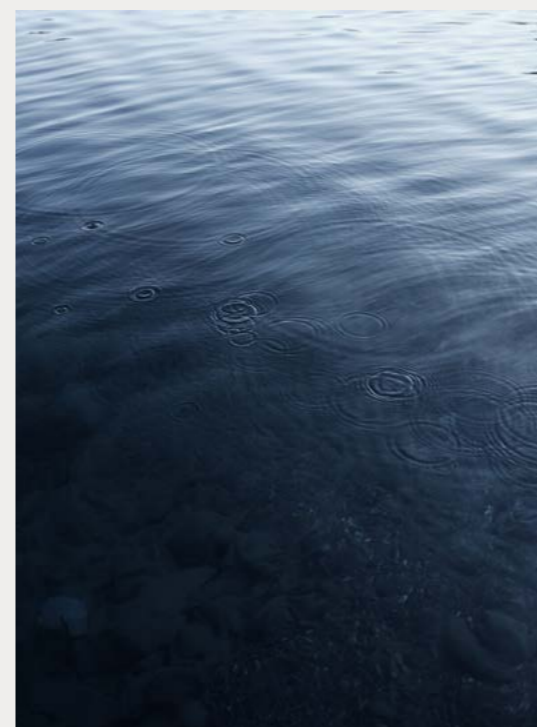
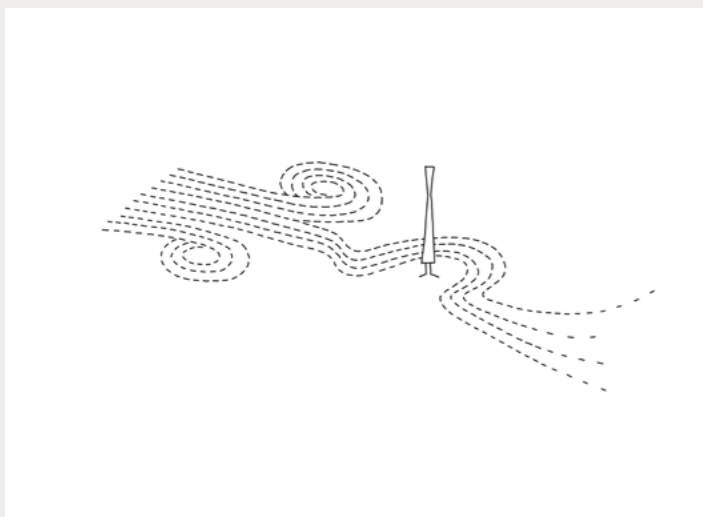
〜 EN 〜 ☺ .

IT Nendo è uno studio di design con sede a Tokyo e Milano, fondato nel 2002 da Oki Sato. I suoi progetti più significativi sono conservati nei musei di tutto il mondo, come il Museum of Modern Art di New York (USA), il Centro Pompidou di Parigi (Francia) e il Victoria & Albert Museum di Londra (Inghilterra). Responsabile del design del braciere olimpico di Tokyo 2020. Attualmente, oltre a lavorare alla progettazione del nuovo treno francese ad alta velocità TGV per le Olimpiadi di Parigi del 2024, è anche il produttore generale del Padiglione del Governo giapponese all'Expo di Osaka Kansai in programma nel 2025.

EN Nendo is a design firm with offices in Tokyo and Milan founded by Oki Sato in 2002. Its most outstanding works are displayed in major museums worldwide, including New York's Museum of Modern Art, Paris' Pompidou Centre, and London's Victoria and Albert Museum. Nendo also designed the Tokyo 2020 Olympic Cauldron. Currently, the firm is working on France's new TGV high-speed train for the 2024 Olympic Games and the Japanese Pavilion at the Osaka-Kansai Expo to be held in 2025.



Windy draws inspiration from the wind, its natural force, and the patterns etched by its poetic dances. This collection's drawings and textures capture the wind's essence and movement as it ripples and swirls on water or across rice paddies and grasslands, creating unexpected, imprecise, yet harmonious shapes.





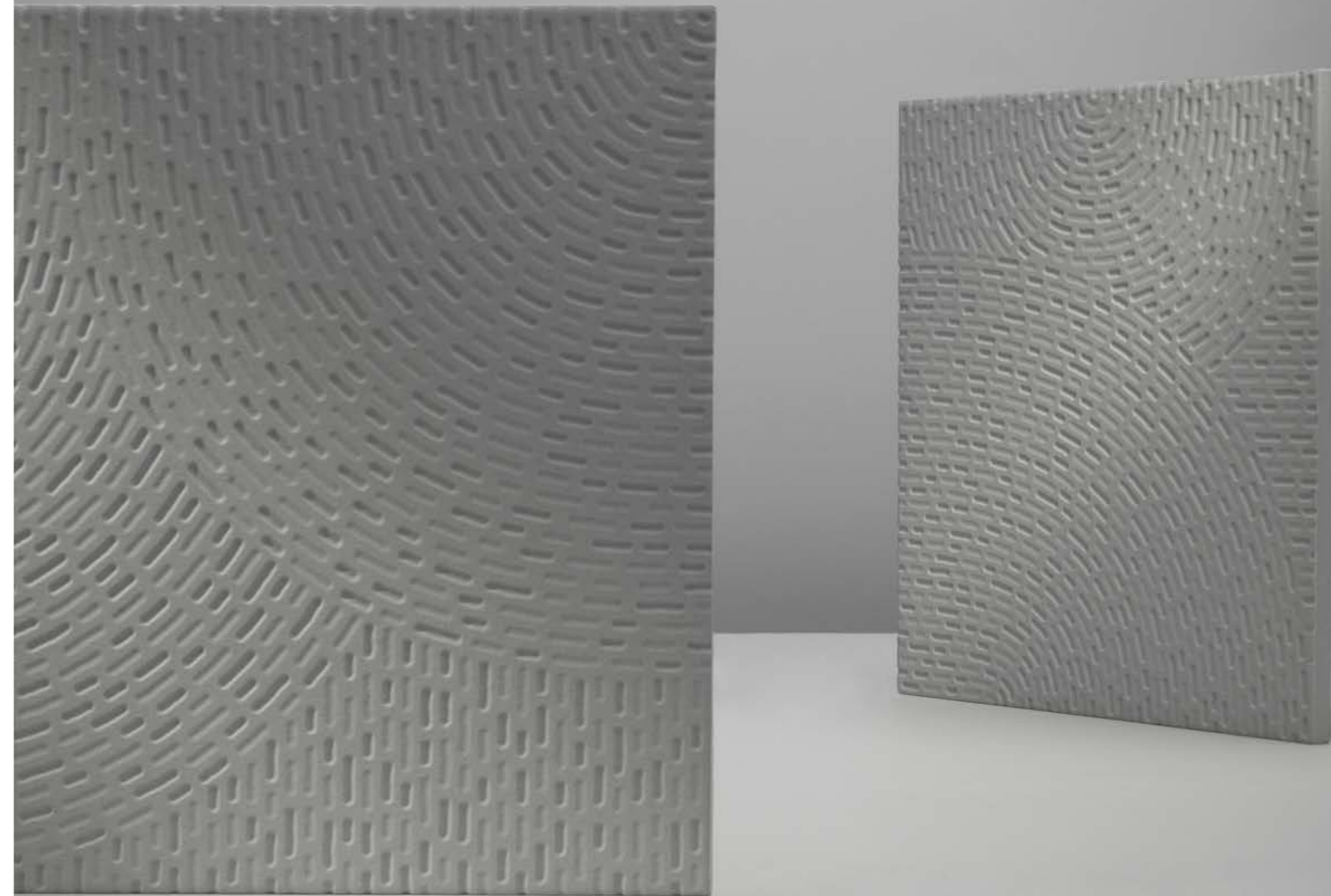
IT Windy - NENDO

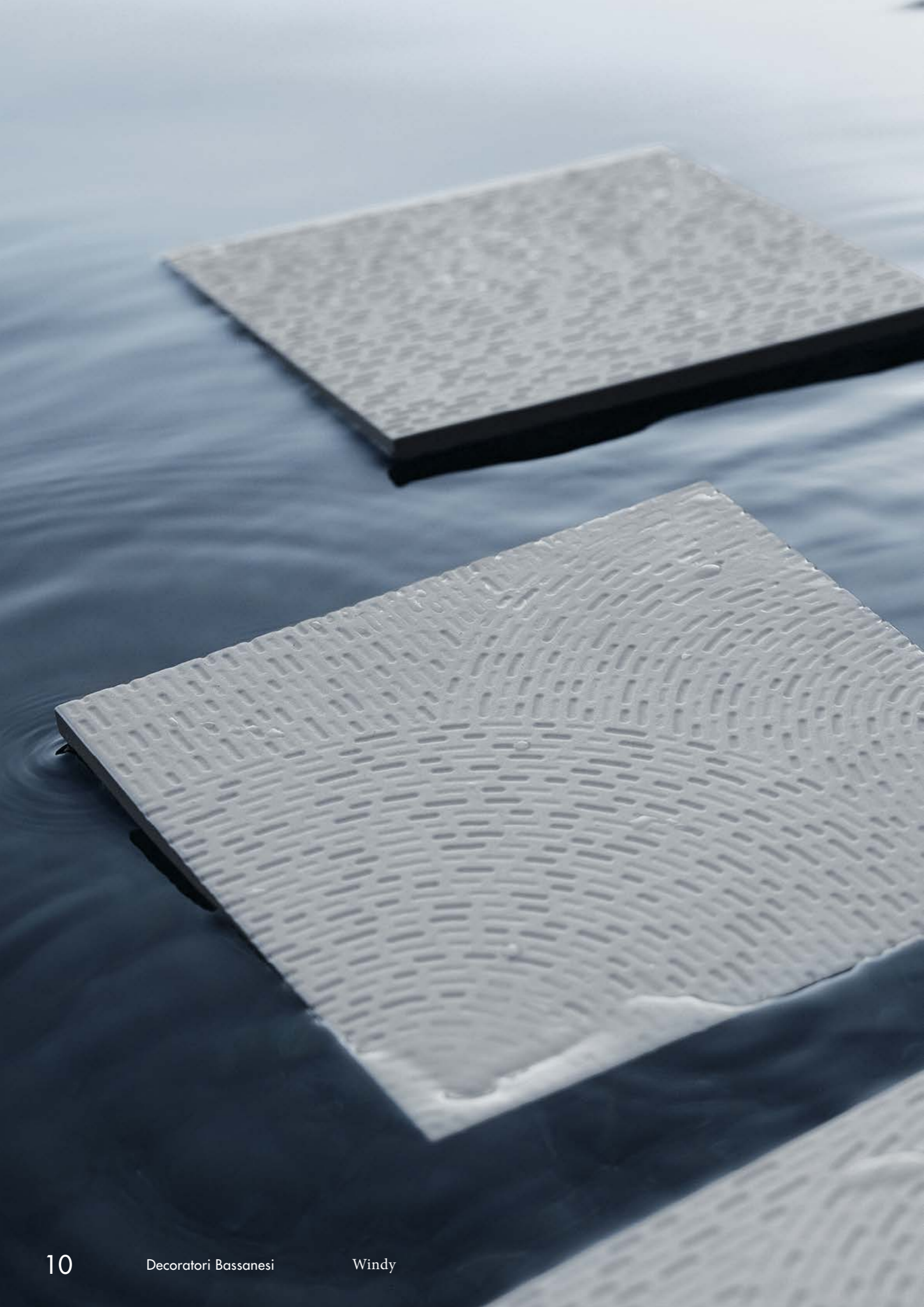
L'incessante spirare del vento, le increspature, le tracce e i vortici lasciati dal suo passaggio sull'acqua o su vaste risaie e campi d'erba, sono gli elementi d'ispirazione per Windy, una collezione nata dall'inesauribile creatività di Oki Sato, chief designer e fondatore del celebre studio Nendo.

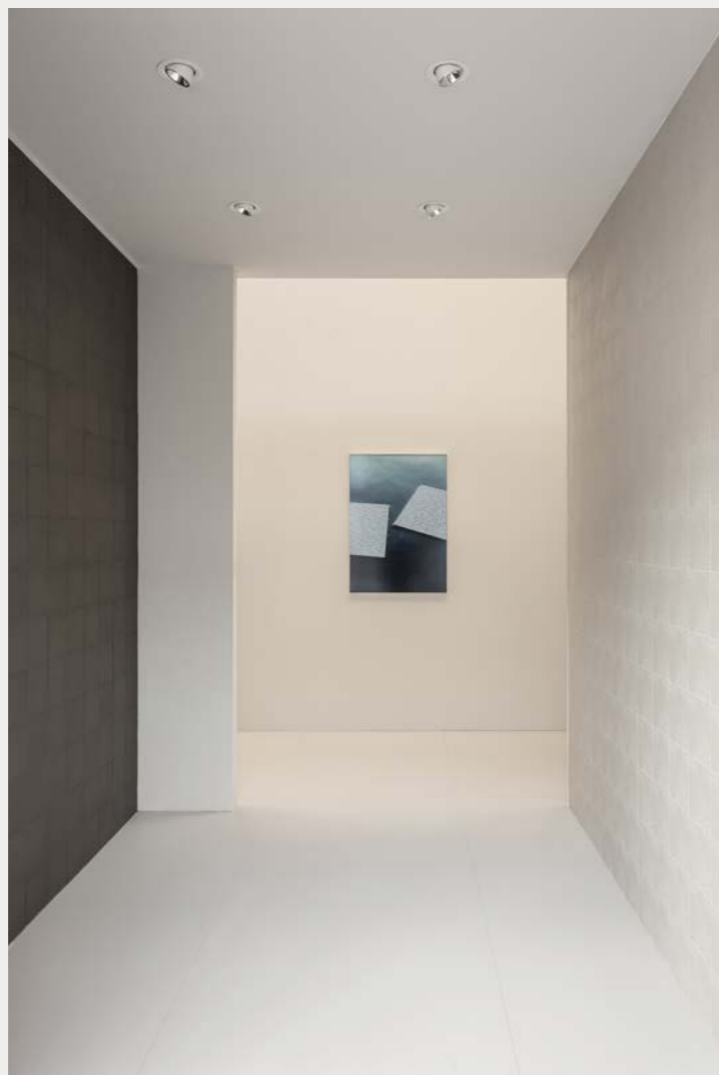
EN Windy - NENDO

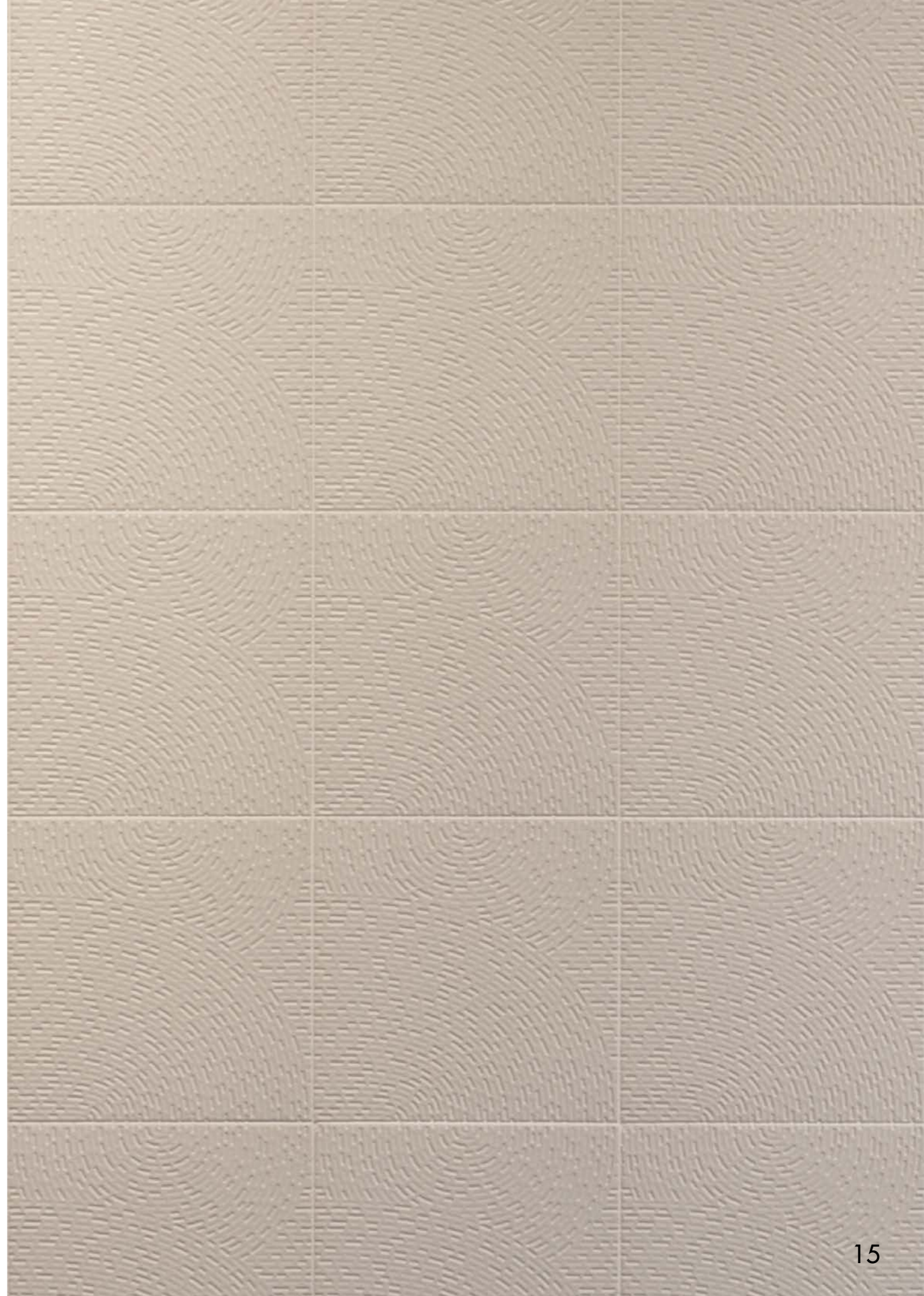
The ceaseless wind and the ripples, swirls, and patterns it creates on water, across rice paddies and grasslands have inspired the new Windy collection by Oki Sato, chief designer and founder of Japan's renowned Nendo design studio.

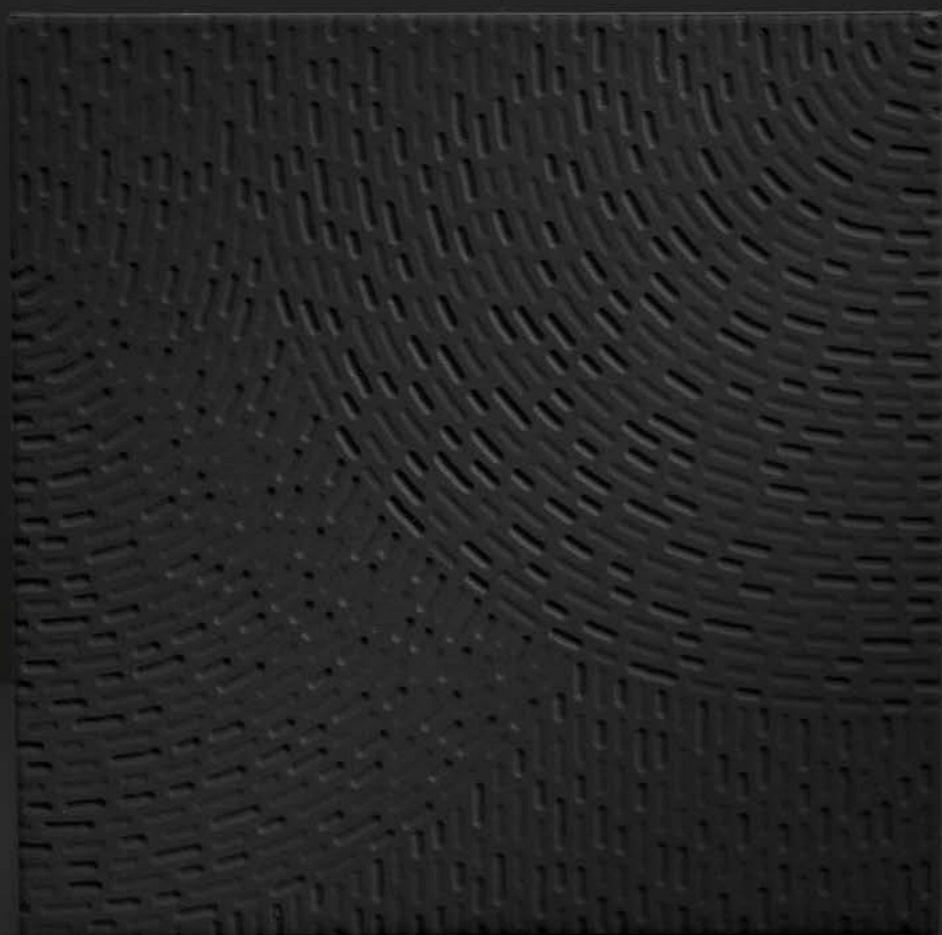
Capturing the invisible. The slight breath of the wind, the ripples and the traces left by its passage across the water and rice paddies have inspired the new Windy collection by Oki Sato, chief designer and founder of Japanese renowned Nendo Studio.











^{IT} Qui i colori vengono fusi direttamente nell'argilla e le superfici decorate con motivi tridimensionali come bassorilievi, questa tecnica permette di realizzare disegni intricati ed unici. Per la realizzazione di Windy è stato seguito proprio questo metodo, realizzando solchi di diverse forme e dimensioni sulla materia liscia. Le sottili differenze nel profilo della sezione trasversale e nella profondità delle scanalature provocano un cambiamento nella percezione delle ombre.

^{EN} Bassano's ceramic art is different from any other because instead of adding hues and patterns at a later stage with glazes, it blends the colour directly with clay and decorates surfaces with three-dimensional motifs like reliefs. Subtle textures would vanish during the glazing surface. However, this technique allows artists to create even intricate drawings while improving the quality and durability of the artefacts. This same technique was used for the Windy collection. Chisels, drills, and bits in different shapes and sizes were used to create grooves in smooth plaster, revealing how subtle differences in their depth and cross-section change the perception of shadows.



Technical Details

Windy

by

NENDO 😊.




Wi

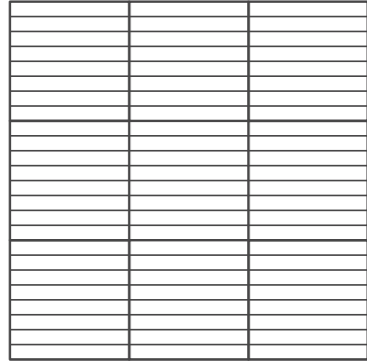
Nendo

Il legger
le tracce
sull'acqua
d'ispiraz
dalla cre
fondato

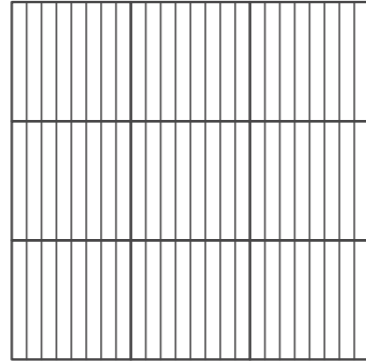
Il design
venti us
attravers
creando
percorsi
effimeri
e traduc
l'incision
progetta
punte di
differenz
scandali
diverse

Windy 01 

Layout A

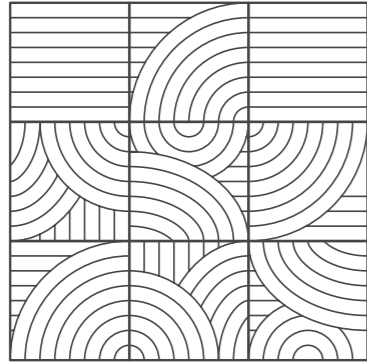


Layout B

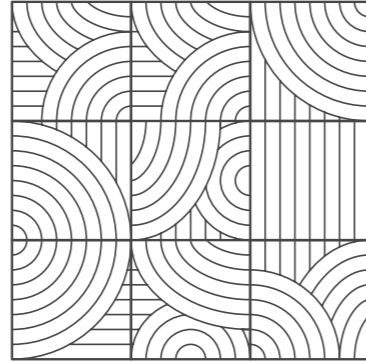



Windy Mix 

Mix random A

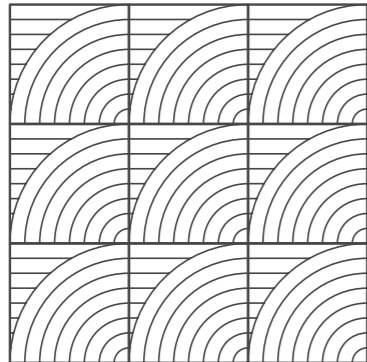


Mix random B

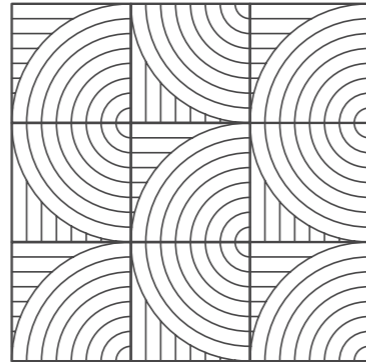


Windy 02 

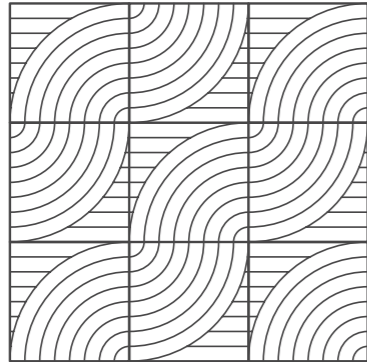
Layout A



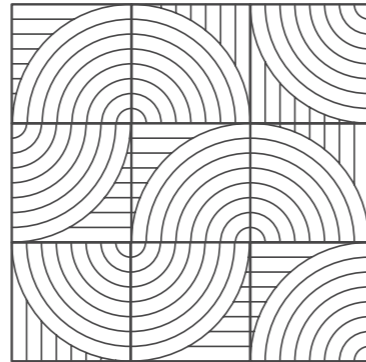
Layout B




Layout C

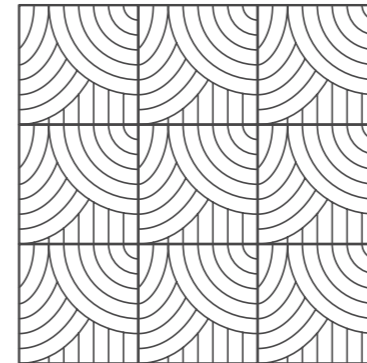


Layout D

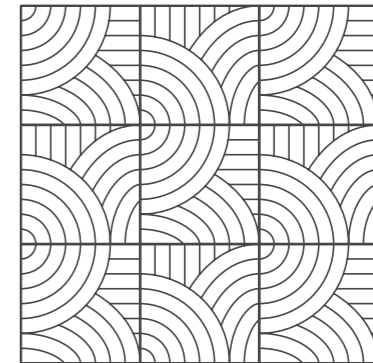


Windy 03 

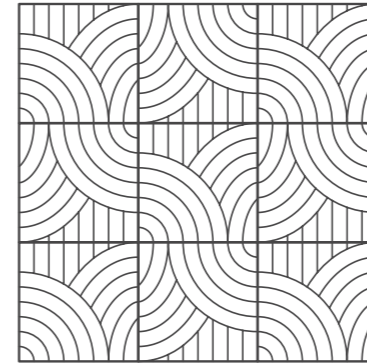
Layout A



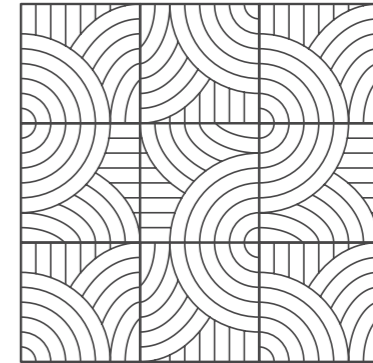
Layout B




Layout C

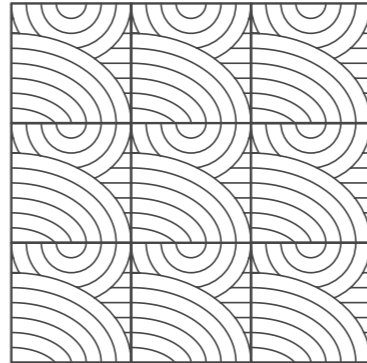


Layout D

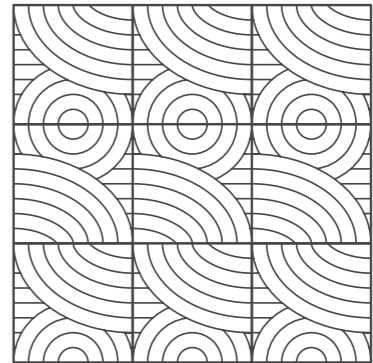


Windy 04 

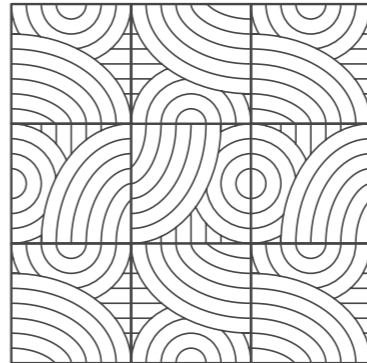
Layout A



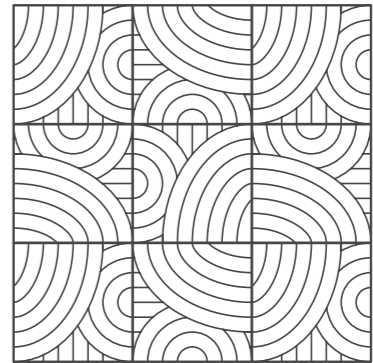
Layout B



Layout C

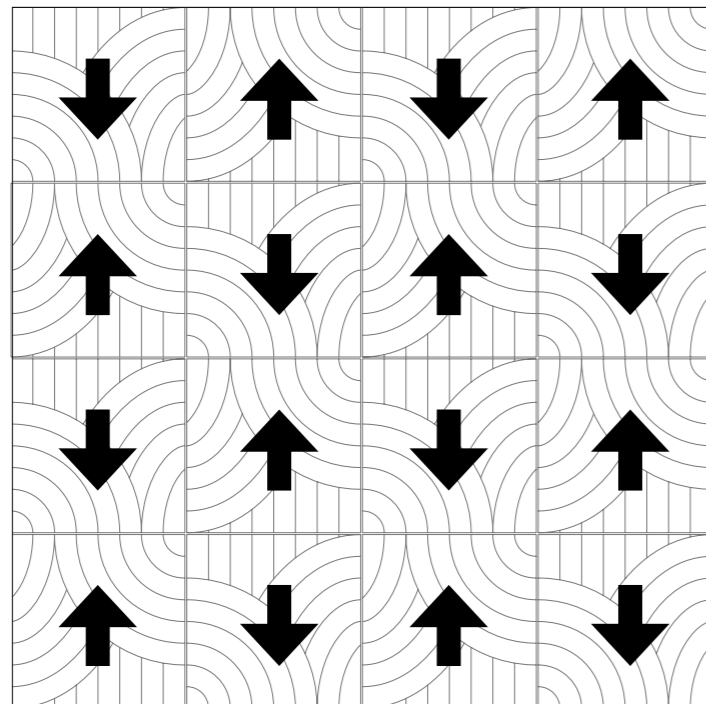


Layout D





Nel retro, la freccia indica il verso di posa.
The arrow printed on the back of each tile indicates the direction and facilitates installation.



Formato reale	cm	inches	Nominal size
	18,5 x 18,5	7-1/4" x 7-1/4"	
Colori			Colours
	(A) Rice · (B) Almond · (C) Dolomite · (D) Pepper		
Fuga			Joint
Fuga minima consigliata 2 mm			Minimum recommended joint 2 mm
Spessore	mm	inches	Thickness
	9	3/8	
Lavorazione			Finishing
Gres porcellanato tutta massa non smaltato UGL			Porcelain gres homogeneous without enamels UGL

Credits

Photography Simone Furiosi, Andrea Olivo, Stefania Zanetti & Matteo Bellomo, Masahiro Ohgami

I colori possono risultare falsati dai procedimenti litografici
The colours could be altered the lithographic printing process

Decoratori Bassanesi srl

Sede legale:

Largo Perlasca, 19 | 36061

Bassano del Grappa (VI)

Uffici e depositi:

via Vallina Orticella, 48 | 31030

Borso del Grappa (TV)

+39 0423 910076

info@decoratoribassanesi.it

decoratoribassanesi.it